

CT Projects Weather Impacts

Plant	Impact
CT1 Lodi	☺
CT1 Alameda	☹
CT2	☹
LEC	☹

Alameda Impact

Alameda outage started 1/9/17

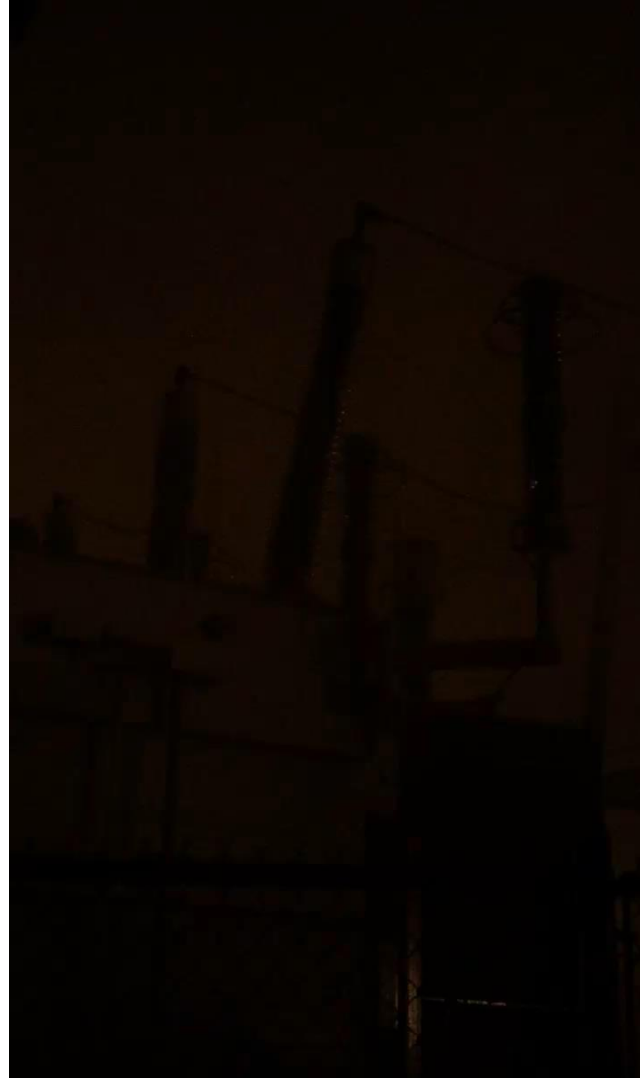
- Outage start delayed due to switching concerns.
- Transformer Bushing work deferred
- AMPS deferred new switch install work
- Inlet coating cure time extended

Result:

- Outage 4 days longer than planned
- Additional outage needed



CT2 Sparking



LEC / CT2 Levee Break



LEC / CT2 Levee Break



LEC / CT2 Levee Break



LEC / CT2 Levee Break

