

Renewable Energy Credits for SEGEP

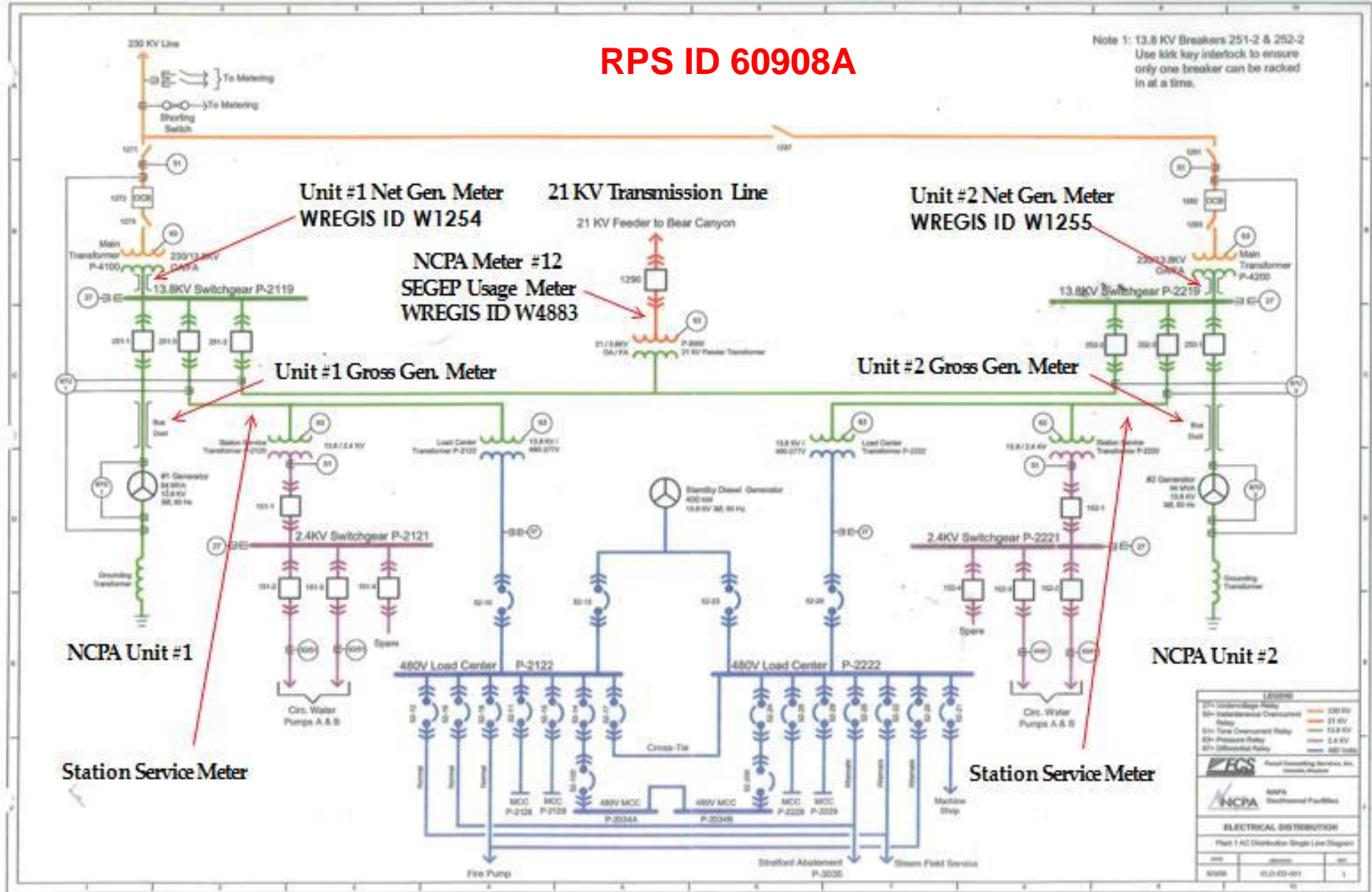
Facilities Committee Meeting

June 1, 2016



RPS ID 60908A

Note 1: 13.8 KV Breakers 251-2 & 252-2
Use kick key interlock to ensure only one breaker can be racked in at a time.



Unit #1 Net Gen. Meter
WREGIS ID W1254

21 KV Transmission Line

Unit #2 Net Gen. Meter
WREGIS ID W1255

NCPA Meter #12
SEGEF Usage Meter
WREGIS ID W4883

Unit #1 Gross Gen. Meter

Unit #2 Gross Gen. Meter

NCPA Unit #1

NCPA Unit #2

Station Service Meter

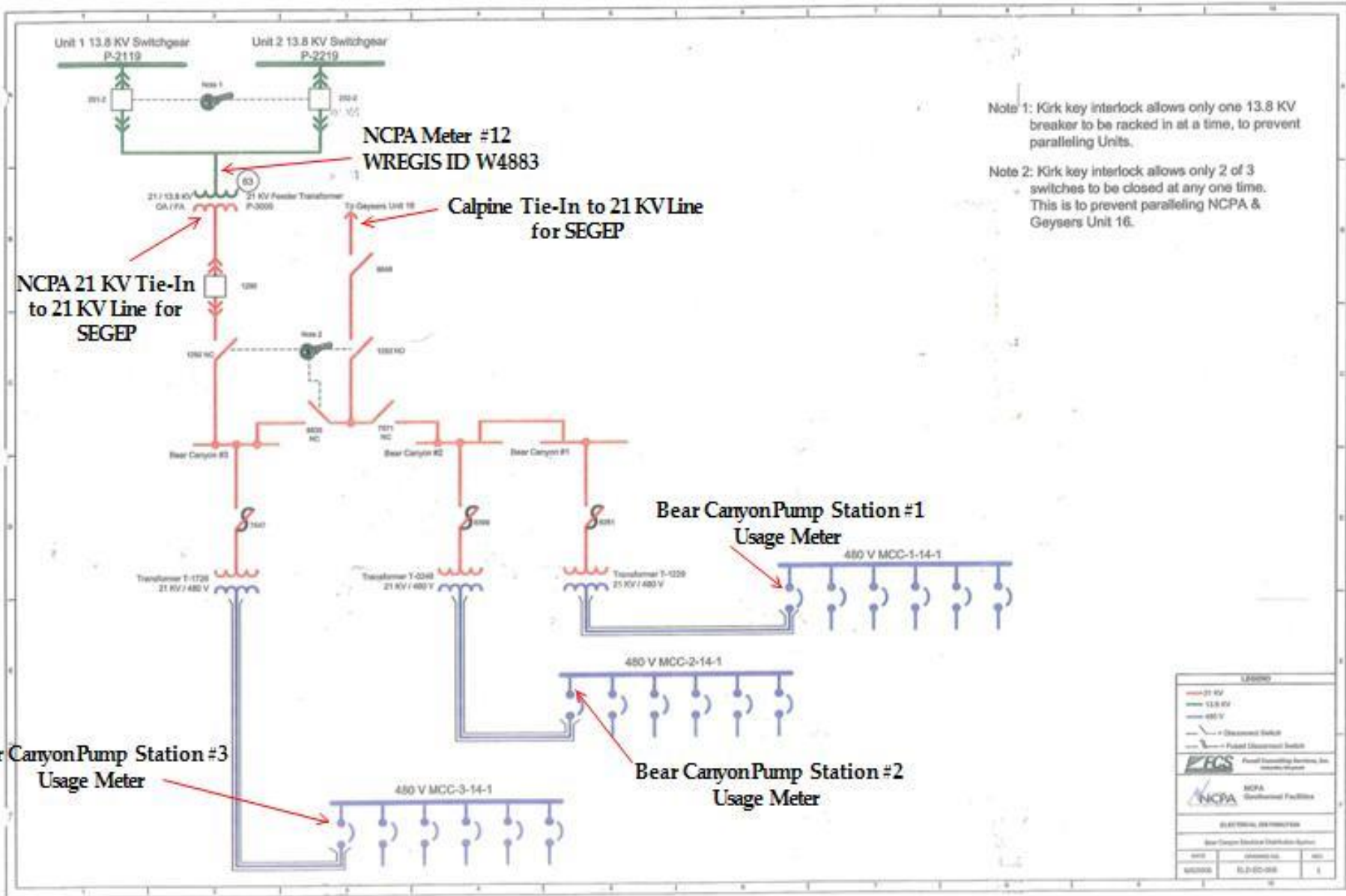
Station Service Meter

LEGEND	
□	230 KV Breaker
□	13.8 KV Breaker
□	2.4 KV Breaker
□	480 V Breaker
□	230 KV Transformer
□	13.8 KV Transformer
□	480 V Transformer
□	Relay
□	230 KV Relay
□	13.8 KV Relay
□	2.4 KV Relay
□	480 V Relay
□	480 V Transformer

EGS
 Electrical Consulting Services, Inc.
 Modesto, California

NCPA
 Northern California Power Agency

ELECTRICAL DISTRIBUTION
 Plant #1 AC Distribution Single Line Diagram
 Date: 05/05/01
 Scale: 1/8" = 1'-0"
 Sheet: 1 of 1



Note 1: Kirk key interlock allows only one 13.8 KV breaker to be racked in at a time, to prevent paralleling Units.

Note 2: Kirk key interlock allows only 2 of 3 switches to be closed at any one time. This is to prevent paralleling NCPA & Geysers Unit 16.

NCPA Meter #12
WREGIS ID W4883

Calpine Tie-In to 21 KV Line
for SEGEP

NCPA 21 KV Tie-In
to 21 KV Line for
SEGEP

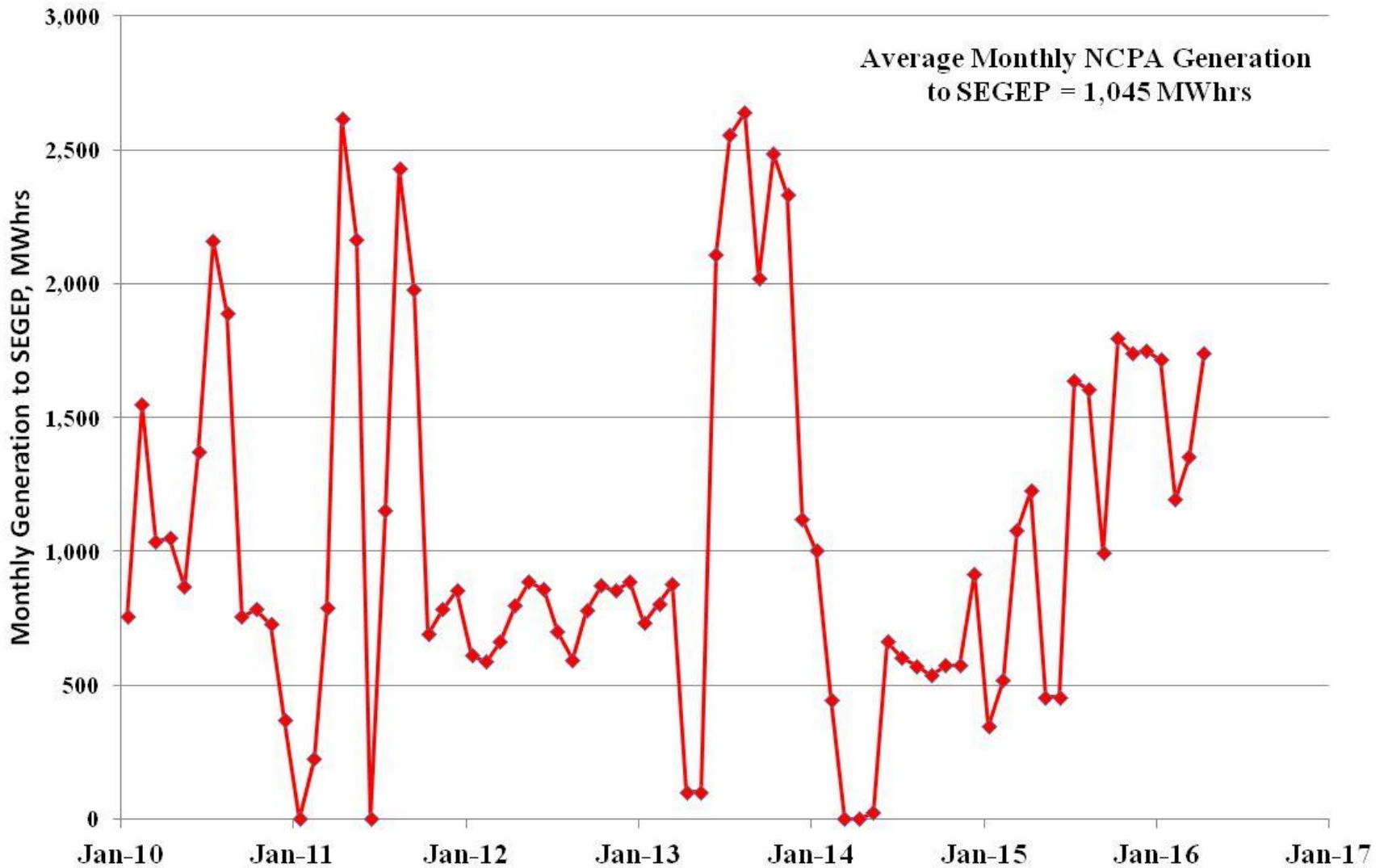
Bear Canyon Pump Station #1
Usage Meter

Bear Canyon Pump Station #2
Usage Meter

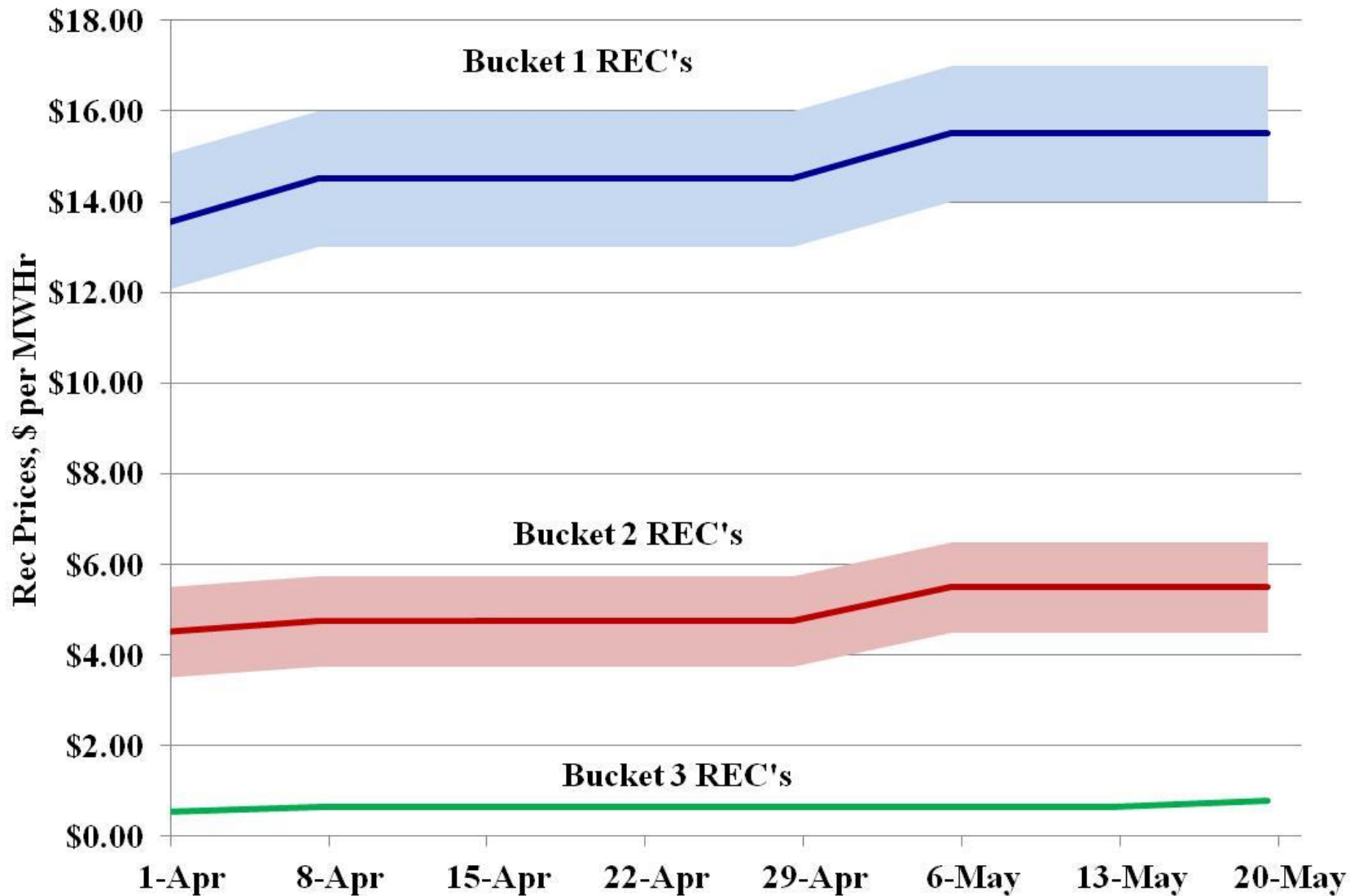
Bear Canyon Pump Station #3
Usage Meter

LEGEND		
	21 KV	
	13.8 KV	
	480 V	
	Observed Switch	
	Fused Disconnect Switch	
EGS Power Consulting Services, Inc. 10000 E. 15th Avenue, Suite 100 Denver, CO 80231		
NCPA Geothermal Facilities		
ELECTRICAL AND INSTRUMENTATION		
Bear Canyon Electrical Distribution System		
DATE	ISSUED BY	REV
11/20/09	ELJ-EC-008	1

NCPA Plant #1 - Monthly Generation to the Southeast Geysers Effluent Pipeline (SEGEP) January 2010 - April 2016



Platts MW Daily - Bundled CA-RPS REC Prices (\$)



Renewable Energy Credits for SEGEP

- **2013 REC's – 15,358 MWhrs**
 - **Covers period of May – December 2013**
 - **Extension for filing is an internal CEC decision**
 - **Informal Tracking System in place**

- **2014 – 2016 REC's – 22,288 MWhrs**
 - **Covers period of June 2014 – March 2016**
 - **Requires WREGIS registration**
 - **Appeal to both CEC and WREGIS**
 - **Requires an audit within 90 days**
 - **Cost for the audit and upload into WREGIS**

Renewable Energy Credits for SEGEP

Summary

- **Members can begin claiming REC's on SEGEP power**
 - **Effective - April 2016**
 - **Consolidated under RPS ID 60908A**
 - **“Bucket 0” REC's (PCC 0)**
 - **Estimated Value of \$188,100 per year**

- **Two requests**
 - **May – December 2013 extension**
 - **Estimated value - \$230,370**
 - **June 2014 – March 2016 appeal**
 - **Estimated Value - \$334,320**