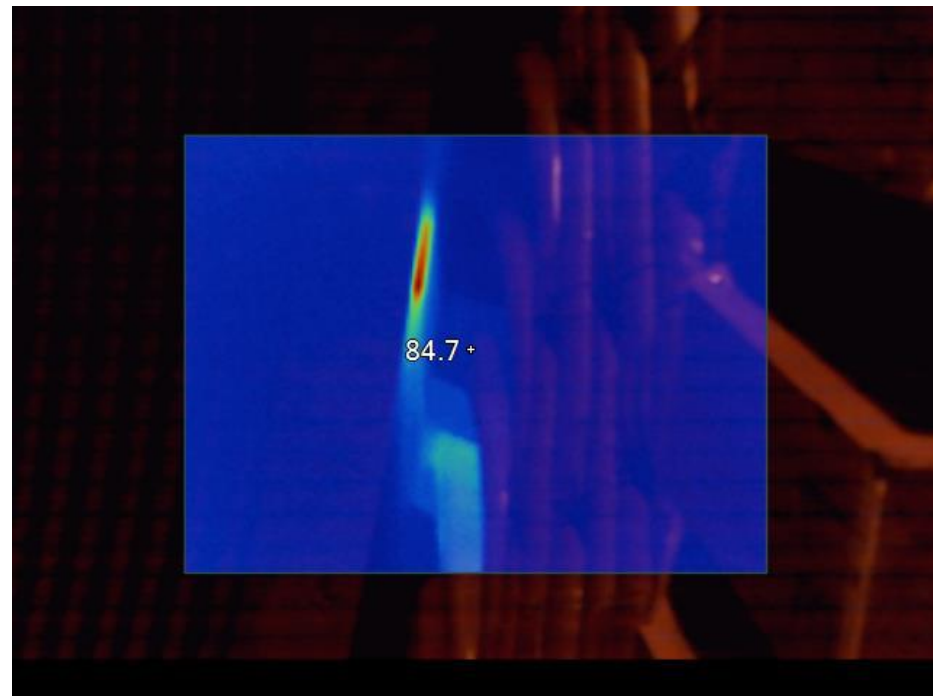


Hydro Update

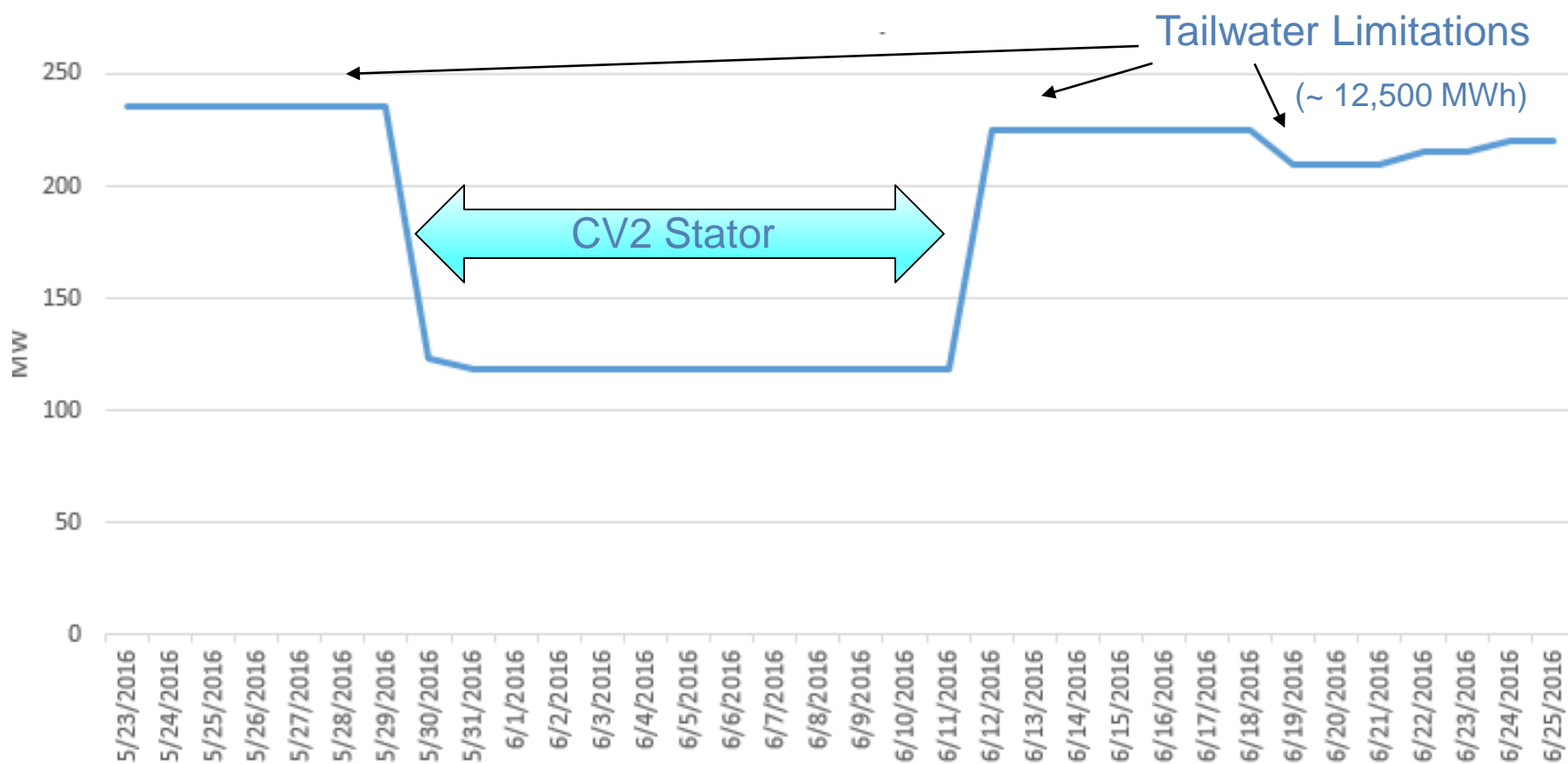


July 5, 2017

Collierville Unit 2 Stator Ground



Collierville Available Capacity



Dollars & Cents

- ~\$850K lost opportunity due to Collierville U2 Stator Fault (between May 30 – June 11)
- ~\$450K lost opportunity due to tailwater curtailment (between May 23 – June 25)
- ~\$2.4M net revenue during recent heat wave (between June 18 – 25)



Dollars & Cents Details – CV2 Generator Fault

RESOURCE_ID	COLVIL_7_PL1X2													
Sum of AMOUNT	Column Labels													
Row Labels	30-May	31-May	1-Jun	2-Jun	3-Jun	4-Jun	5-Jun	6-Jun	7-Jun	8-Jun	9-Jun	10-Jun	11-Jun	Grand Total
AncillaryService	\$ (1,293)	\$ (5,814)	\$ (4,723)	\$ (4,426)	\$ (3,324)	\$ (3,679)	\$ (4,842)	\$ (4,006)	\$ (3,717)	\$ (5,382)	\$ (6,093)	\$ (4,462)	\$ (6,444)	\$ (58,205)
Day Ahead Regulation Down Capacity Settlement	\$ (3,127)	\$ (5,870)	\$ (4,729)	\$ (4,425)	\$ (3,330)	\$ (3,713)	\$ (4,792)	\$ (3,987)	\$ (3,743)	\$ (5,362)	\$ (5,553)	\$ (3,771)	\$ (5,700)	\$ (58,102)
Day Ahead Regulation Up Capacity Settlement		\$ (22)									\$ (676)	\$ (202)	\$ (252)	\$ (1,152)
Day Ahead Spinning Reserve Capacity Settlement		\$ (60)					\$ (55)					\$ (491)	\$ (488)	\$ (1,093)
No Pay Spinning Reserve Settlement		\$ 12												\$ 12
Non Compliance Regulation Down Settlement	\$ 1,841	\$ 109	\$ 19	\$ 27	\$ 20	\$ 52	\$ 25	\$ 21	\$ 51	\$ 17	\$ 124	\$ 37	\$ 30	\$ 2,375
Non Compliance Regulation Up Settlement		\$ 22									\$ 28			\$ 50
Regulation Down Mileage Settlement	\$ (7)	\$ (6)	\$ (13)	\$ (29)	\$ (14)	\$ (19)	\$ (21)	\$ (40)	\$ (25)	\$ (37)	\$ (16)	\$ (33)	\$ (33)	\$ (293)
Regulation Up Mileage Settlement											\$ (0)	\$ (2)	\$ (1)	\$ (3)
CostRecovery	\$ (2,184)	\$ (2,925)												\$ (5,108)
RUC and RTM Bid Cost Recovery Settlement	\$ (2,184)	\$ (2,925)												\$ (5,108)
Energy	\$ (96,261)	\$ (69,960)	\$ (61,208)	\$ (67,865)	\$ (60,586)	\$ (54,551)	\$ (65,146)	\$ (71,294)	\$ (73,284)	\$ (68,596)	\$ (58,330)	\$ (34,031)	\$ (25,003)	\$ (806,114)
Day Ahead Energy, Congestion, Loss Settlement	\$ (147,324)	\$ (72,935)	\$ (61,214)	\$ (67,861)	\$ (60,590)	\$ (54,529)	\$ (65,074)	\$ (71,257)	\$ (73,290)	\$ (68,602)	\$ (58,343)	\$ (32,126)	\$ (22,817)	\$ (855,961)
FMM Instructed Imbalance Energy Settlement	\$ 49,914	\$ 1,549					\$ (47)	\$ (1)				\$ (1,847)	\$ (1,991)	\$ 47,577
Real Time Instructed Imbalance Energy Settlement	\$ 1,149	\$ 1,426	\$ 6	\$ (4)	\$ 3	\$ (22)	\$ (26)	\$ (36)	\$ 6	\$ 6	\$ 13	\$ (58)	\$ (194)	\$ 2,270
Real Time Uninstructed Imbalance Energy Settlement	\$ (0)	\$ (0)	\$ 0	\$ 0	\$ 0	\$ 0	\$ 0	\$ 0	\$ 0	\$ 0	\$ 0	\$ 0	\$ 0	\$ 0
Flexible Ramp	\$ 9	\$ 12	\$ 16	\$ (17)	\$ (5)	\$ 5	\$ (5)	\$ (43)	\$ (8)	\$ (4)	\$ (4)	\$ (145)	\$ (75)	\$ (264)
Daily Flexible Ramp Up Uncertainty Award Allocation	\$ 0		\$ 0	\$ 0	\$ 0	\$ 0	\$ 0	\$ 0	\$ 0	\$ 0	\$ 0	\$ 0	\$ 0	\$ 0
Flexible Ramp Down Uncertainty Capacity Settlement												\$ (58)	\$ (105)	\$ (163)
Flexible Ramp Forecasted Movement Settlement	\$ 9	\$ 12	\$ 16	\$ (17)	\$ (5)	\$ 5	\$ 24	\$ (21)	\$ (8)	\$ (4)	\$ (4)	\$ (87)	\$ 30	\$ (49)
Flexible Ramp Up Uncertainty Capacity Settlement							\$ (30)	\$ (21)						\$ (51)
GMC	\$ 1,617	\$ 1,102	\$ 993	\$ 978	\$ 975	\$ 971	\$ 974	\$ 985	\$ 983	\$ 990	\$ 965	\$ 931	\$ 878	\$ 13,343
GMC - Bid Transaction Fee	\$ 2	\$ 2	\$ 1	\$ 1	\$ 2	\$ 1	\$ 1	\$ 1	\$ 1	\$ 1	\$ 1	\$ 1	\$ 1	\$ 19
GMC - Market Services Charge	\$ 674	\$ 290	\$ 253	\$ 246	\$ 243	\$ 240	\$ 243	\$ 253	\$ 243	\$ 250	\$ 240	\$ 244	\$ 233	\$ 3,653
GMC - System Operations Charge	\$ 941	\$ 810	\$ 738	\$ 731	\$ 731	\$ 730	\$ 729	\$ 731	\$ 739	\$ 739	\$ 724	\$ 685	\$ 644	\$ 9,671
Grand Total	\$ (98,111)	\$ (77,585)	\$ (64,921)	\$ (71,330)	\$ (62,940)	\$ (57,254)	\$ (69,020)	\$ (74,358)	\$ (76,026)	\$ (72,992)	\$ (63,461)	\$ (37,707)	\$ (30,644)	\$ (856,348)

Note: Revenues are for CV1 only. If CV2 had been available, revenues would have been approximately double.



Dollars & Cents Details – Heat Wave

Sum of AMOUNT	Column Labels								
Row Labels	6/18/2017	6/19/2017	6/20/2017	6/21/2017	6/22/2017	6/23/2017	6/24/2017	6/25/2017	Grand Total
COLVIL_7_PL1X2	\$ (189,726)	\$ (272,130)	\$ (336,336)	\$ (577,477)	\$ (478,490)	\$ (189,442)	\$ (149,913)	\$ (143,521)	\$ (2,337,036)
AncillaryService	\$ (1,489)	\$ (379)	\$ (1,158)	\$ (1,210)	\$ (652)	\$ (1,839)	\$ (919)	\$ (1,183)	\$ (8,827)
Day Ahead Regulation Down Capacity Settlement	\$ (1,552)	\$ (384)	\$ (1,177)	\$ (1,241)	\$ (662)	\$ (1,881)	\$ (945)	\$ (1,224)	\$ (9,066)
Non Compliance Regulation Down Settlement	\$ 74	\$ 9	\$ 36	\$ 40	\$ 20	\$ 58	\$ 29	\$ 49	\$ 315
Regulation Down Mileage Settlement	\$ (11)	\$ (4)	\$ (17)	\$ (9)	\$ (9)	\$ (16)	\$ (3)	\$ (9)	\$ (76)
Energy	\$ (190,191)	\$ (273,686)	\$ (337,002)	\$ (578,093)	\$ (479,649)	\$ (189,482)	\$ (150,843)	\$ (144,228)	\$ (2,343,175)
Day Ahead Energy, Congestion, Loss Settlement	\$ (190,133)	\$ (289,145)	\$ (336,822)	\$ (578,216)	\$ (479,662)	\$ (189,500)	\$ (150,760)	\$ (144,233)	\$ (2,358,471)
FMM Instructed Imbalance Energy Settlement		\$ 14,826							\$ 14,826
Real Time Instructed Imbalance Energy Settlement	\$ (57)	\$ 633	\$ (180)	\$ 123	\$ 12	\$ 18	\$ (83)	\$ 4	\$ 471
Real Time Uninstructed Imbalance Energy Settlement	\$ (0)	\$ (0)	\$ (0)	\$ 0	\$ (0)	\$ (0)	\$ (0)	\$ (0)	\$ (0)
Flexible Ramp	\$ (6)	\$ 33	\$ 8	\$ 4	\$ (8)	\$ 5	\$ (18)	\$ (6)	\$ 12
Daily Flexible Ramp Up Uncertainty Award Allocation		\$ 0			\$ 0				\$ 0
Flexible Ramp Forecasted Movement Settlement	\$ (6)	\$ 33	\$ 8	\$ 4	\$ (8)	\$ 5	\$ (17)	\$ (6)	\$ 13
Flexible Ramp Up Uncertainty Capacity Settlement							\$ (1)		\$ (1)
GMC	\$ 1,959	\$ 1,902	\$ 1,817	\$ 1,822	\$ 1,819	\$ 1,873	\$ 1,867	\$ 1,896	\$ 14,955
GMC - Bid Transaction Fee	\$ 1	\$ 1	\$ 1	\$ 1	\$ 1	\$ 1	\$ 1	\$ 1	\$ 11
GMC - Market Services Charge	\$ 441	\$ 472	\$ 411	\$ 410	\$ 406	\$ 429	\$ 421	\$ 429	\$ 3,420
GMC - System Operations Charge	\$ 1,517	\$ 1,429	\$ 1,404	\$ 1,411	\$ 1,411	\$ 1,443	\$ 1,445	\$ 1,465	\$ 11,524
SPICER_1_UNITS	\$ (4,941)	\$ (7,530)	\$ (9,298)	\$ (16,809)	\$ (13,510)	\$ (5,176)	\$ (4,253)	\$ (3,967)	\$ (65,486)
Grand Total	\$ (194,667)	\$ (279,661)	\$ (345,634)	\$ (594,286)	\$ (492,001)	\$ (194,619)	\$ (154,166)	\$ (147,489)	\$ (2,402,521)

New Spicer Meadow Dam, PH, & Spillway

