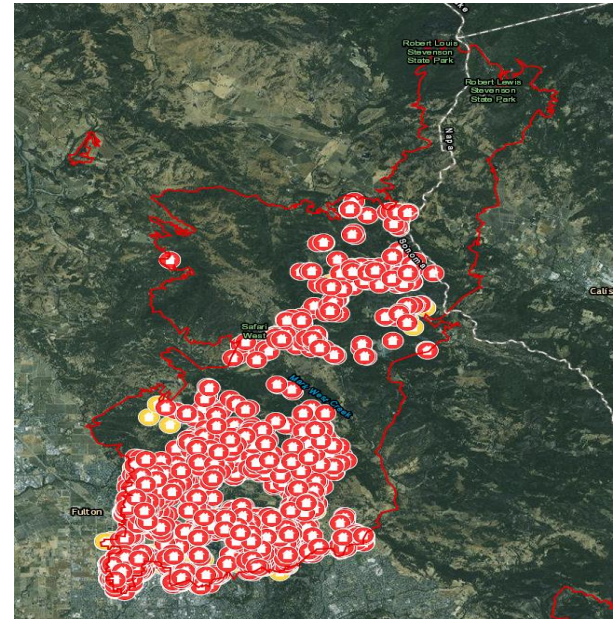


Geyzers Fire 2017



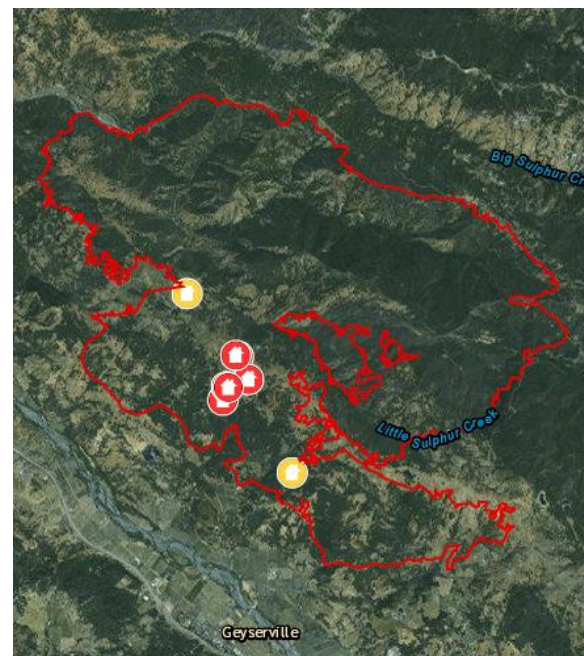
Tubbs Fire (Central LNU Complex) Incident Information:

Last Updated:	October 24, 2017 7:18 am
Date/Time Started:	October 08, 2017 9:45 pm
Administrative Unit:	CAL FIRE Sonoma-Lake-Napa Unit
County:	Napa County, Sonoma County
Location:	off of Hwy 128 and Bennett Ln, Calistoga
Acres Burned - Containment:	36,807 acres - 94% contained

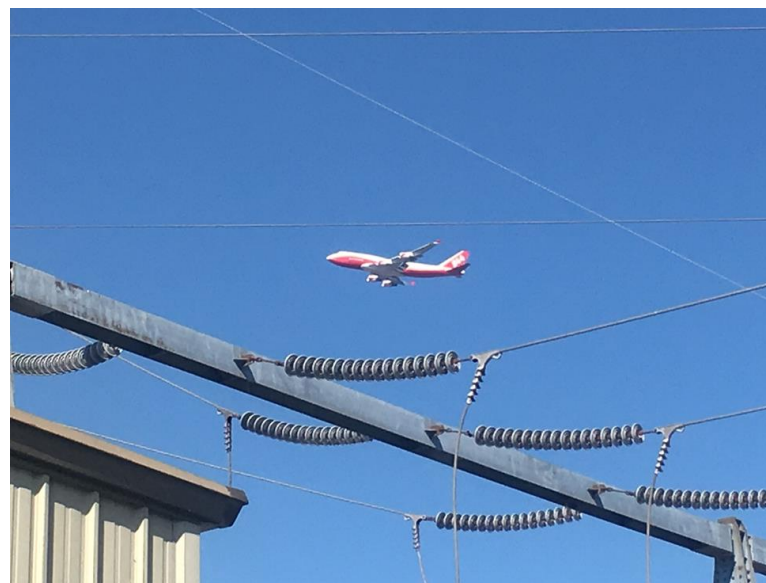


Pocket Fire (Central LNU Complex) Incident Information:

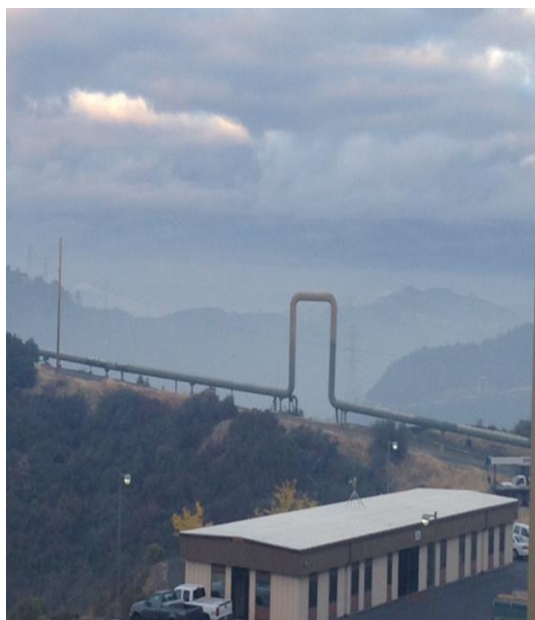
Last Updated:	October 24, 2017 7:14 am
Date/Time Started:	October 09, 2017 3:30 am
Administrative Unit:	CAL FIRE Sonoma-Lake-Napa Unit
County:	Sonoma County
Location:	off of Pocket Ranch Rd and Ridge Ranch Rd, Geyserville



- The Tubbs Fire started on 10/8/17 and The Pocket Fire Started on 10/9/17, the causes are still under investigation.
- 42 victims died in these fires.
- The Tubbs fire started in Calistoga and spread rapidly to Santa Rosa destroying more than 6,707 structures.
- The pocket fire started above the town of Geyserville and was burning North, through hillsides towards Cloverdale and East towards Geysers Calpine.
- Five of NCPA's employees were effected by evacuations on 10/9 living in both Lake and Sonoma counties.
- Prior to the fires PG&E had scheduled their 230kv line out of service to replace one of their towers due to sliding, thus the need to take Plant 1 and several Calpine plants off line. The PG&E crews scheduled to work on the tower replacement were called off to respond to fire needs. Plant 1 remained out of service until 10/20 waiting for the line to become available.



- Fire hoses were laid out and extra personnel were scheduled in over the weekend for safety and fire watch.
- The Pocket fire continued to burn until Wednesday 10/11 when air support was sent over to work the fire. The Healdsburg and Cloverdale roads were closed due to fire leaving the Pine Flat Road for Sonoma County personnel to enter utilizing their ID badges for access.
- The Geo Facility had heavy smoke conditions blown in from both The Pocket Fire and The Tubbs Fire creating Moderate to Unhealthy Air Quality for Lake and Sonoma Counties.
- The Pocket Fire burned within approximately 5 miles from the Plants.



- Plant staffing and outage work were evaluated to substantiate the need for extra staffing for fire watch over the weekend and additional work that could be completed while the plant remained out of service. This work included switch gear and breaker inspections and servicing, cooling tower distribution valve and deck repair, Stretford system tank repair, main steam stop valve repair. The Engineering Department had also inspected the condenser ball cleaning system during this down time.
- PG&E 230kv line became available late on the night of 10/18. Plant 1, Unit 1 returned to service on 10 /19 and Unit 2 returned to service on 10/20 after completion of the main stop valve repair.

