

# CT1 Lodi

## CY2017 Operations

	Availability	Capacity Factor (8,760 Hours)	Capacity Factor (200 Hours)	Forced Outage Rate	# Starts	Service Hours	Average Energy Rate Earned (\$/MWhr)
Jan-17	100.00%	0.39%	14.05%	1.75%	2	3	44
Feb-17	98.07%	1.32%	46.94%	1.03%	1	8	27
Mar-17	99.07%	0.14%	5.16%	0.00%	1	1	98
Apr-17	64.17%	0.33%	11.60%	0.00%	2	2	96
May-17	100.00%	2.67%	95.20%	0.00%	12	20	113
Jun-17	100.00%	7.33%	261.64%	20.86%	13	54	166
Jul-17	79.81%	4.37%	156.07%	7.65%	16	34	88
Aug-17	92.35%	6.22%	222.12%	0.27%	14	47	187
Sep-17	68.51%	4.03%	143.94%	0.00%	6	23	250
Oct-17	100.00%	0.66%	23.57%	39.09%	3	4	0
	90.20%	2.75%	98.03%	7.06%	70	197	119

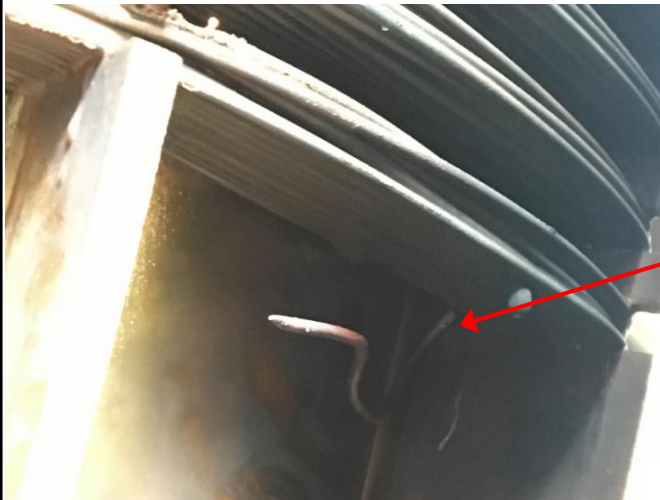
3 Average hours  
per start

# U-Type Bushing Replacement



~\$264k

# Aux Transformer Failure



Failed winding



Blown and melted leads

~\$74k



New Transformer