



Combustion Turbine

CT1 – Lodi

Hot Gas Path

Exposed

Looking through removed burner cans



Exposed

CT1



~\$500,000

LEC



~\$7,000,000

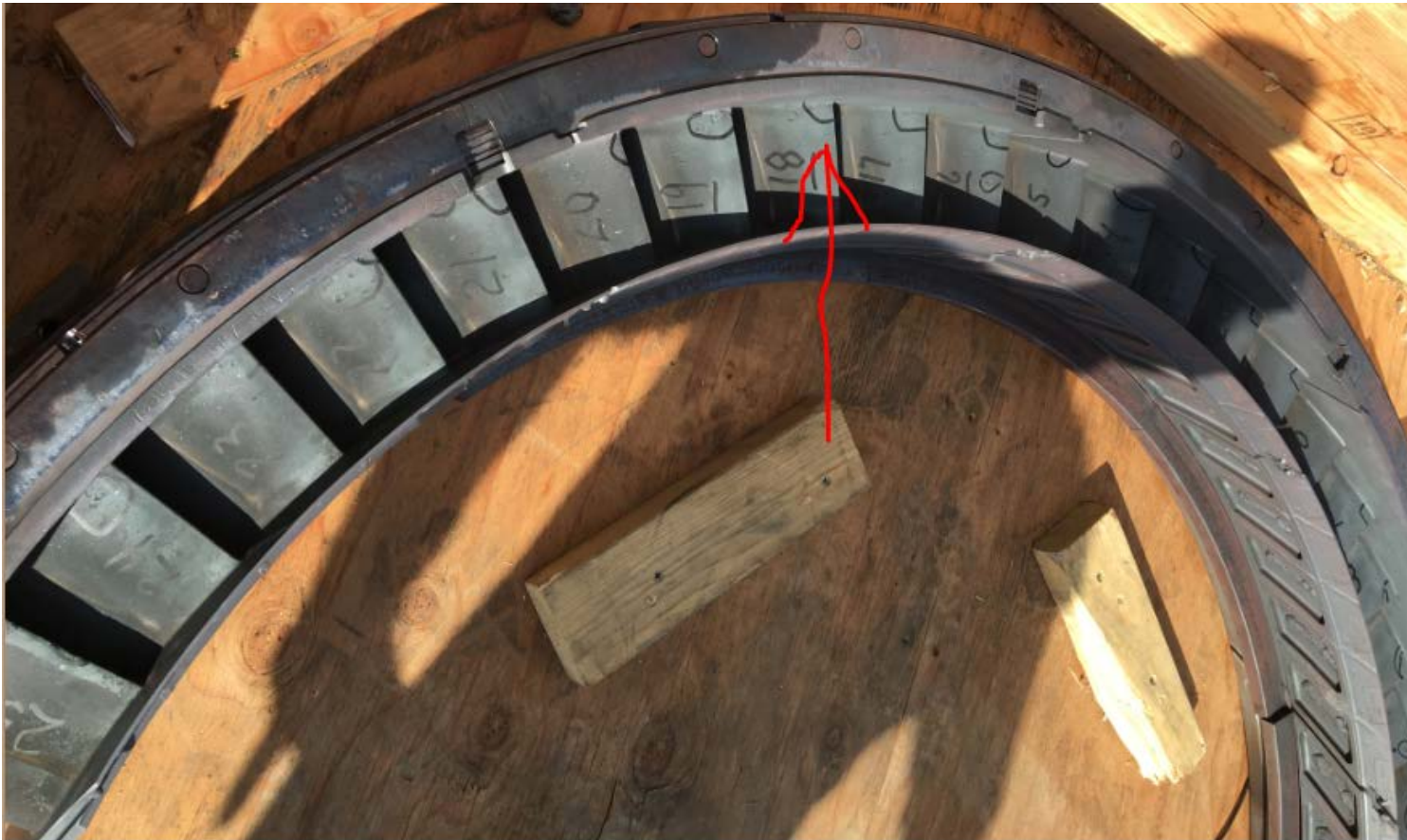
Problem Areas

- Significant problem with broken bolts



Problem Areas

- Row 2 nozzles, black circles are cracks



Problem Areas

- Row 1 shroud block erosion



Costs

	Budgeted Cost	Projected Cost
Base Cost	\$308,368	\$308,368
Refurbishment	\$84,491	\$90,991
Parts	\$18,608	\$18,608
Contingency	\$88,533	\$36,154
	\$500,000	\$454,121

Remainder
\$45,879